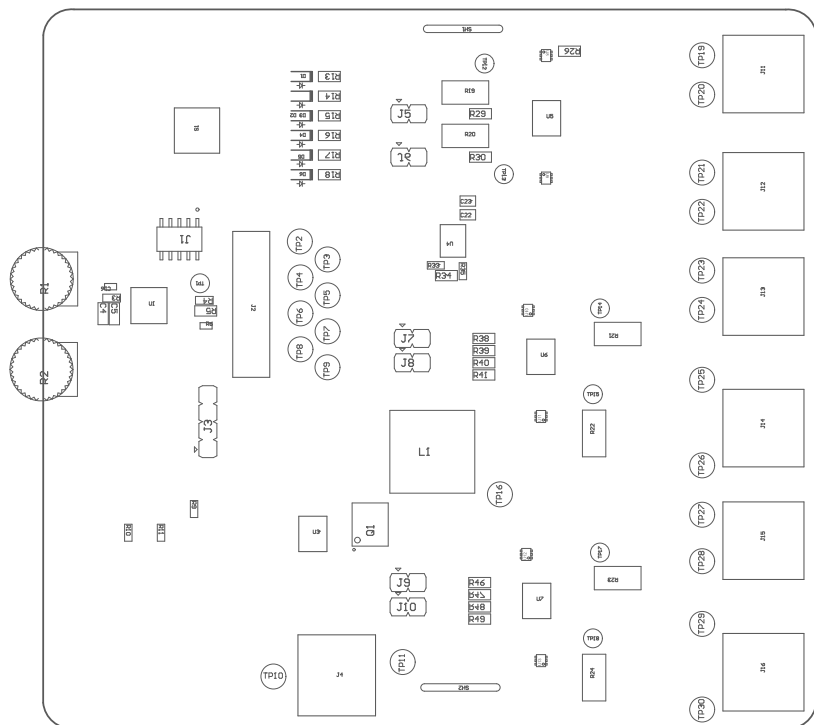


Z21 ■ Install label in silkscreened box after final wash. Text shall be 8 pt font. Text shall be per the Label Table in the PDF schematic.

Z22 ■ These assemblies are ESD sensitive, ESD precautions shall be observed.

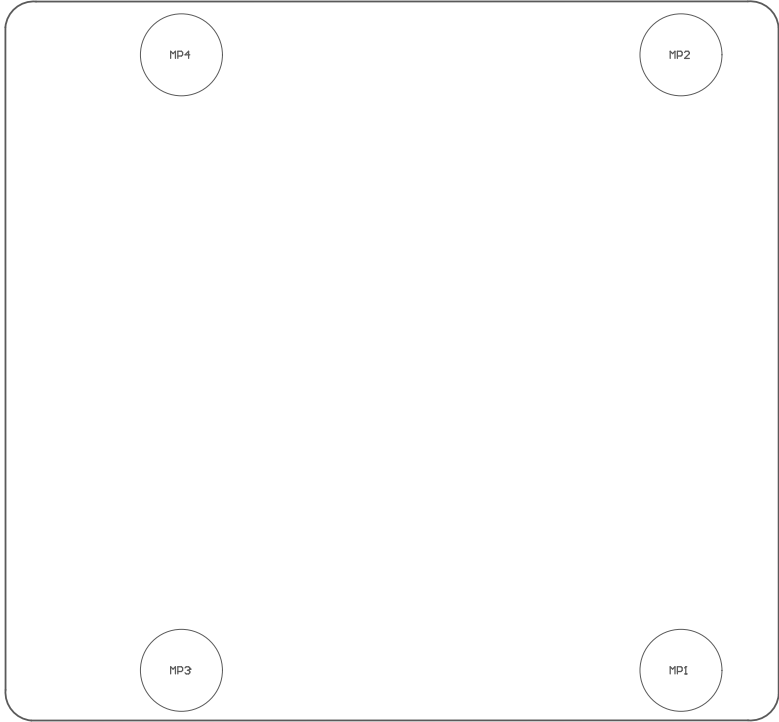
Z23 ■ These assemblies must be clean and free from flux and all contaminants. Use of no clean flux is not acceptable.

Z24 ■ These assemblies must comply with workmanship standards IPC-A-610 Class 2, unless otherwise specified.



COMPONENTS MARKED 'DNP' SHOULD NOT BE POPULATED.
ASSEMBLY VARIANT: DRU81325-01EVM

PCB VIEWED FROM TOP SIDE	BOARD #: MD129-001	REV: E2	SUN REV: Not in version control
	TID #: N/A		
PLOT NAME = Top Assembly Drawing	GENERATED : 4/13/2026 2:47:06 PM	TEXAS INSTRUMENTS	



Not in version control

COMPONENTS MARKED 'DNP' SHOULD NOT BE POPULATED.
ASSEMBLY VARIANT: DRV81325-GIEUM

PCB VIEWED FROM BOTTOM SIDE	BOARD #: MD129-001	REV: E2	SUN REV:
	TID #: N/A		
PLOT NAME = Bottom Assembly Drawing	GENERATED : 4/13/2026 2:47:06 PM		TEXAS INSTRUMENTS